

Loxo 12 Kiosk Family

MAY 2020



 image**HOLDERS**

www.imageholders.com | 01202 892863 | sales@imageholders.com

Introduction	2
Applications	6
Mounting Options	7
Device Integration	8
Accessibility	10
Colour & Branding	11
Dimensions & Materials	13
Compatible Tablets	14

Here at **imageHOLDERS**, we **design and manufacture tablet enclosures, kiosks and innovative m.POS solutions**, which allow your business to **engage customers and drive sales**.

Our patent pending design process means we are **the only company in the world** who can securely display any Windows, Android or iOS tablet.

We can **tailor our kiosk solutions to your** businesses requirements, ensuring the result to be a **versatile product** that works across **any industry, sector or user journey**. **imageHOLDERS' success** is a result of our ability to **listen** to our customers needs, allowing a completely **bespoke approach** to each project.

Who We Help



NORDSTROM



NEW
LOOK



LADBROKES
CORAL
GROUP

imageHOLDERS are passionate about helping other **businesses drive sales, increase revenue**, securely manage visitor and **access control**, gather **data** and invaluable feedback, all whilst promoting **optimum efficiency** for smoother internal and external processes.

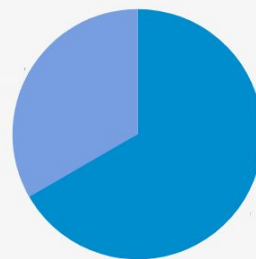

65% of British operators cited **staff productivity** as the number one benefit for kiosk deployment. Other **benefits** cited included **reducing customer waiting times** (62%), **revenue generation** (58%) and **increasing product sales** (54%).*

It's believed that within the next 12 months, kiosks will be mainstream in the U.K., with similar trends globally.

The **kiosk market** is large and **growing at an exponential rate** every day as businesses cannot afford to get left behind.

58% of U.K. hospitality sectors to adopt self-serve tech in the next 12 months

global interactive kiosk market to be worth
\$30.53 billion
by 2023



more than
2/3_s
of consumers
are now using self-checkout

**All statistics sourced at Kiosk Marketplace.*

What is the Loxo 12?

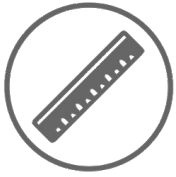
Based on **5 years'** of your **feedback** and **insight**, we have developed the new **Loxo 12 Kiosk Family**. **Lightweight, strong** and completely **versatile**, the Loxo 12 is our **best product yet**.

The Loxo 12 Kiosk Family is, amongst many other tablets, **Windows Surface** and **iPad Pro** compatible, abundant in **expansion modules for additional devices** and is both **ADA and DDA compliant**, allowing it to be suitable for use by every audience.

Ample **adaptable** features ensure that the Loxo 12 is the ideal solution for **multiple environments** such as Retail, Hospitality, Healthcare, Leisure, and a wide range more.



Key Features



Fits Tablets up to 12.9"



ADA and DDA Compliant



Lighter than Steel



Multiple Camera Aperture Options



Optional On/Off Access



Optional Device Add-Ons



Highly Secure and Rigid

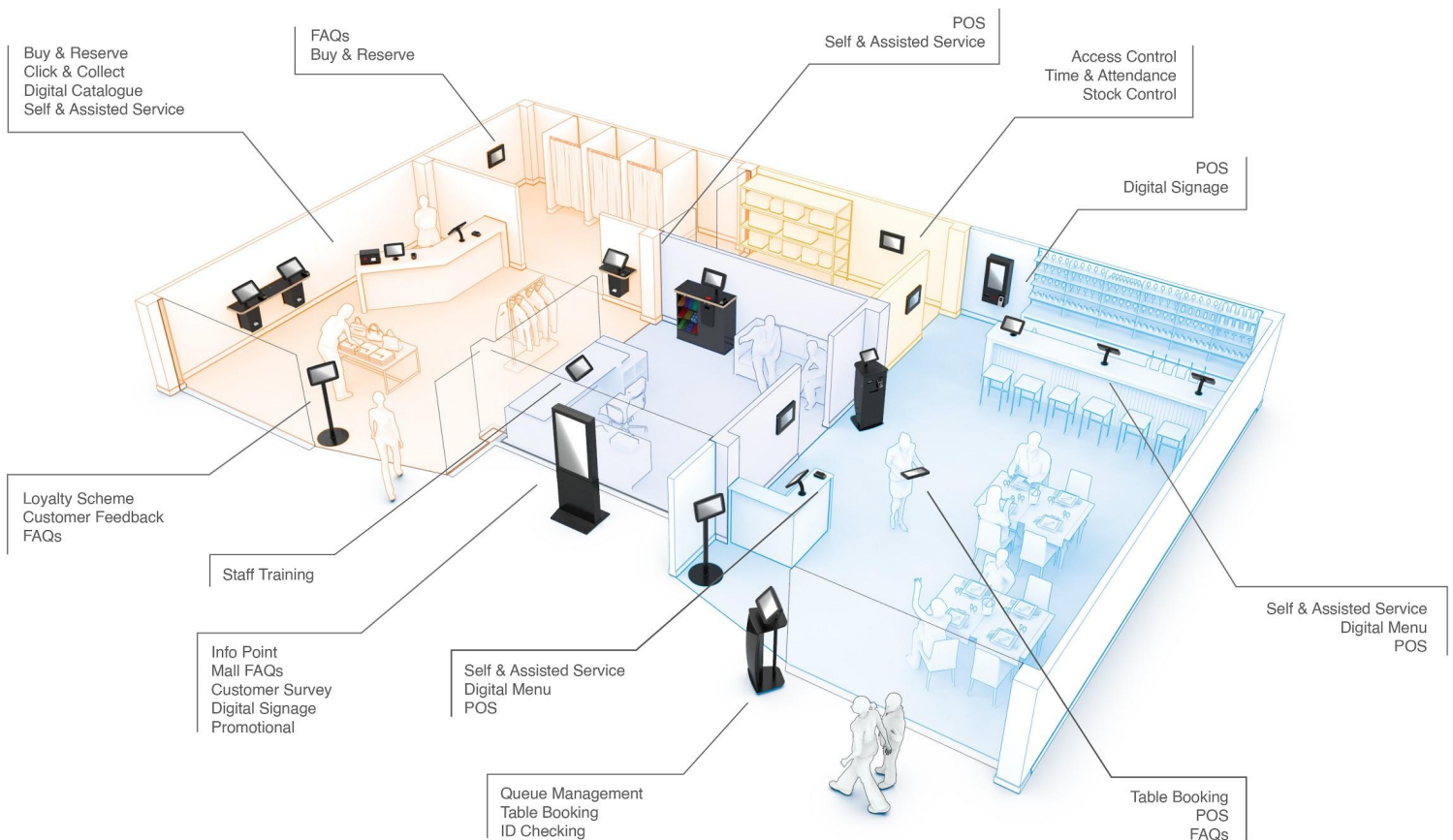


Multiple Mounting Options

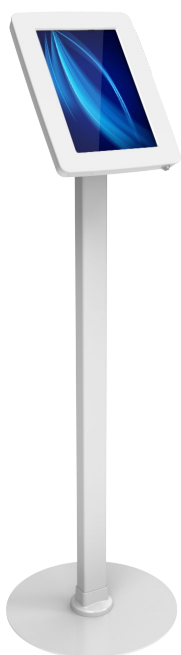


Our kiosks are **widely versatile** across **multiple sectors** and **environments**, from leisure centres to high-security offices and retail to hospitals. In each industry, the kiosks **promote efficiency, increase security and boost revenue**.

Below, we have an example of a **retail** environment and just *some* of the locations where **kiosk solutions** can be **deployed to push business forward**.



The **Loxo 12** can be **mounted** in several different ways, such as freestanding, tabletop and flush to the wall. This ensures that the products work seamlessly for **multiple user journeys** and **purposes** across many **industries** and **sectors**.



Freestanding
CODE: TBC



Wall Mounted
CODE: TBC



Tabletop
CODE: TBC



Table Mounted
CODE: TBC



The Loxo 12 is **completely versatile**, utilised in either **portrait or landscape**. With the added use of an expansion unit, the Loxo 12 has the option to **add on multiple devices** tailored to your **industry and requirements**.

Please **get in touch** to discuss possible configurations, which can be **custom made** to fit the needs of your business.



For larger device setups, the Loxo 12 can be easily mounted onto our **Full Integration Kiosk**. This solution allows more room for larger devices, whilst providing opportunity for clear signage on it's graphic panel.

The following are examples of devices we can integrate:

- Printers (Label, Receipt, A4, etc)
- Coin and Note Acceptors
- PVC Card Dispensers
- Document Scanners

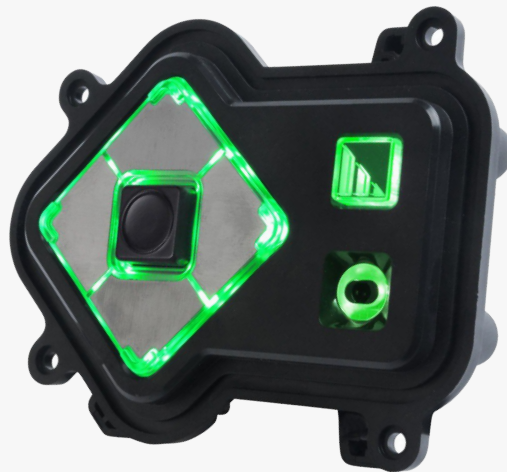
Get in touch with the team today to discuss the **Full Integration Kiosk** in more detail.

Today, the consideration of your kiosk audience and their requirements is essential.

The Loxo 12 boasts a wide range of features to improve accessibility and is **fully ADA/DDA compliant**.

The option of a headphone audio jack and added braille on the bezel ensures that the kiosk is functional for all.

Additional integrated devices, such as a nav-pad, external keyboard and the ability to install coiled cables enable lower reaches to PEDs and other devices.





All our kiosks can be finished in **different colours and branding, bespoke** to your business.

A professional finish with clear signage elevates your **consumer journey and promotes efficiency.**

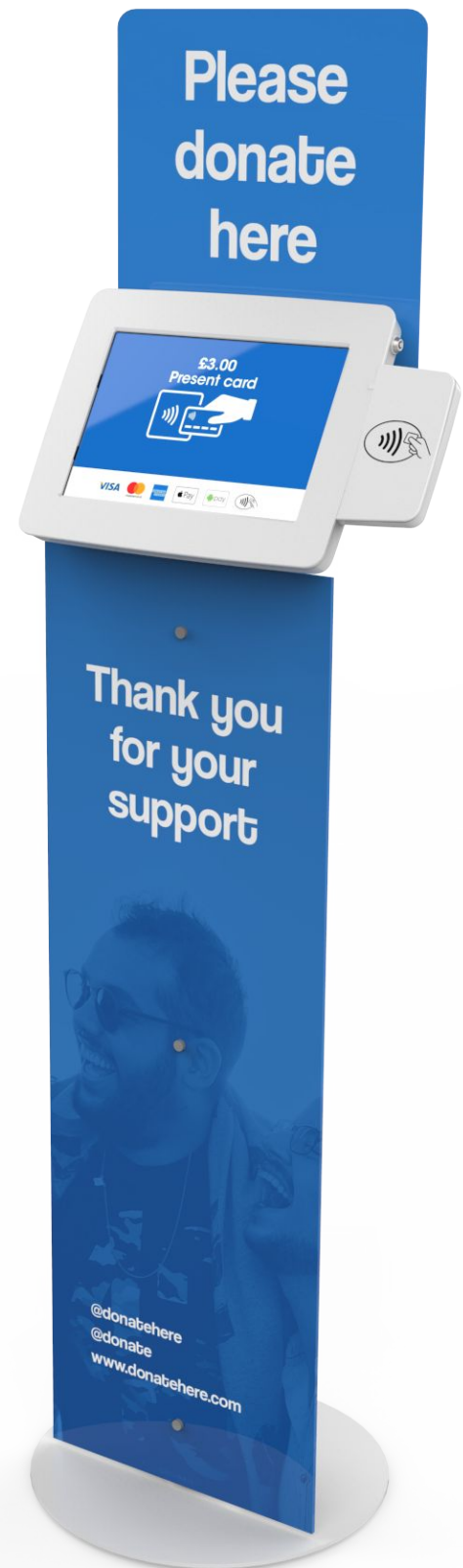
The Loxo 12 comes in black and white as standard. **Custom colours** are available as an additional option.

Optional branding panels can be added to the Loxo 12, allowing for **clear signage** and **advertising** to be displayed.

Graphic panels **increase engagement** with the kiosk and ensure the **correct usage** via clear **instructional** signage.

Branding panels fit the Loxo 12 into it's required environment seamlessly.

Customisation of the displays gives a completely **cohesive finish** within the space in which the kiosk is deployed.





Built from strong **glass-filled polycarbonate**, the Loxo 12 is great for **enduring** high levels of **constant use** whilst remaining **highly secure**.

Loxo 12 Dimensions

280 x 368 x 31mm

Loxo 12 Weight

3.5kg / 7.7lbs

Setup Time

10 Minutes

Tablet Fitting Time

30 Seconds

For a full detailed specification sheet, get in touch with the team today.

The **Loxo 12** can fit any tablet with dimensions **less than 324W x 246H x 13D mm**. If you would like **more information** on the compatibility of your chosen tablet, please don't hesitate to **get in contact**.

Tested and proven to fit the Loxo 12:

Brand	Model	Generation	Size
Apple	iPad Pro	1st (2015), 2nd (2017), 3rd (2018), 4th (2020)	12.9"
Apple	iPad Pro	1st (2018), 2nd (2020)	11"
Huawei	MateBook	E (2019)	12"
Lenovo	IdeaPad	Miix 700 (2015)	12"
Lenovo	IdeaPad	Miix 520 (2017)	12.2"
Lenovo	ThinkPad X1	3rd (2018)	13"
Linx	12x64	1st (2016)	12.5"
Linx	12v64	1st (2016)	12.2"
Linx	12v32	1st (2016)	12.2"
Microsoft	Surface Pro	3rd (2014)	11.8"
Microsoft	Surface Pro	4th (2015), 5th (2017), 6th (2018), 7th (2019)	12.3"
Microsoft	Surface Pro	X (2019)	13"
Samsung	Tab	Pro (2014)	12.2"
Samsung	Tab	Pro S (2016)	12"
Samsung	Galaxy Note	Note Pro (2014)	12.2"
Samsung	Galaxy Book	1st (2017), Book2 (2018)	12"



www.imageholders.com

UK: 01202 892 863 | **USA:** 1-888-858-9778

sales@imageholders.com



© imageHOLDERS Ltd. All rights reserved.